



Temperature Logger Software Installation

Installation Instructions

3M Track and Trace Solutions

3M Center, Building 225-4N-14

St. Paul, Minnesota 55144-1000

xx-xxxx-xxxx-x, Rev. A

© 2010, 3M. All rights reserved.

3M™ Temperature Logger Software Installation Instructions

xx-xxxx-xxxx-x, Rev. A

3M is a trademark of 3M. Microsoft and Windows are either registered trademarks or trademarks of Microsoft Corporation in the United States and/or other countries. The information contained herewithin is intended for use by 3M customers, agents and employees.

Installation Instructions

Table of Contents

Introduction	1
What's new.....	1
Installing the Temperature Logger Software	2
Step 1 – Download the software from the 3M web site.....	2
Step 2 – Install the 3M Temperature Logger software.....	3
Appendix A – Troubleshooting	7
If you need assistance.....	8
3M service phone numbers	8

Introduction

What's new

The TL-30 temperature logger replaces the model TL-20 and has the following **new** features:

- **Wider temperature range** — The TL-30 can record temperatures between -30° C and +80° C (-22° F and +176° F). The TL-30 can also store up to 30,000 data points.

NOTE: Exposing the device to temperatures outside this range could cause erroneous data and possible damage the device.

- **Works on Windows XP, Vista and Windows 7.**
- **The TL-30 connects to your PC using a standard USB Male A to Mini B cable** (not included). The cable you need should have ends that look like this:



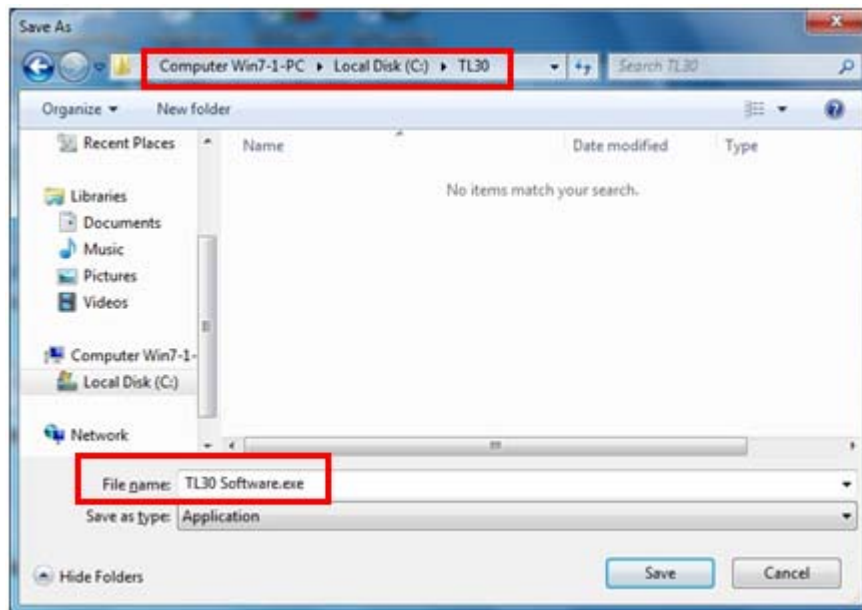
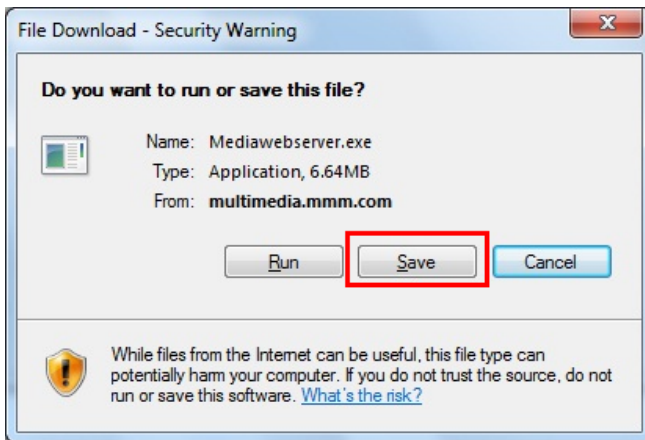
NOTE: You must connect the T-Logger **DIRECTLY** to a computer. You cannot go through a USB hub or docking station.

Installing the Temperature Logger Software

Step 1 – Download the software from the 3M web site

The current version of the software is available on the 3M Temperature Logger web site and is a free download.

- 1 Go to <http://www.3m.com/temperaturelogger> . Select your country or region.
- 2 On the left side of the main page, click the link for the Software Download.
- 3 Enter your information and click the Send button to proceed.
- 4 Select the link with the languages that you need.
- 5 When you are asked to download the file, click SAVE and store this on your PC, then select a folder and give the file a new name

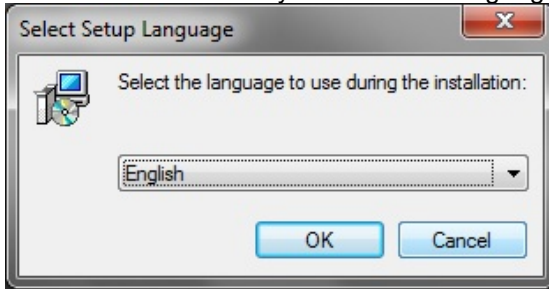


- 6 Proceed to Step 2.

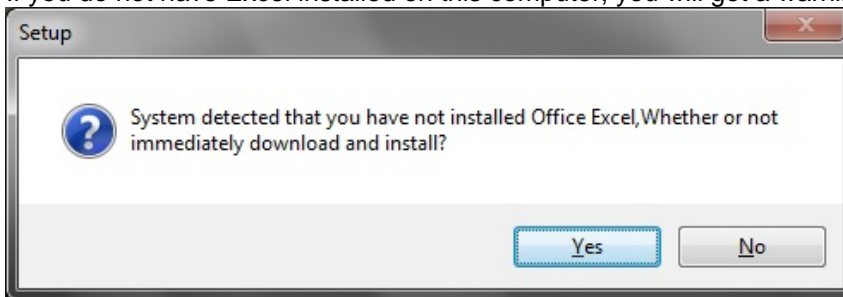
Step 2 – Install the 3M Temperature Logger software

Run the software installation program from the folder that you saved in step 1. You must have local admin rights to install the software.

1. The first screen will let you select the language for the installation. Select a language and click **OK**:

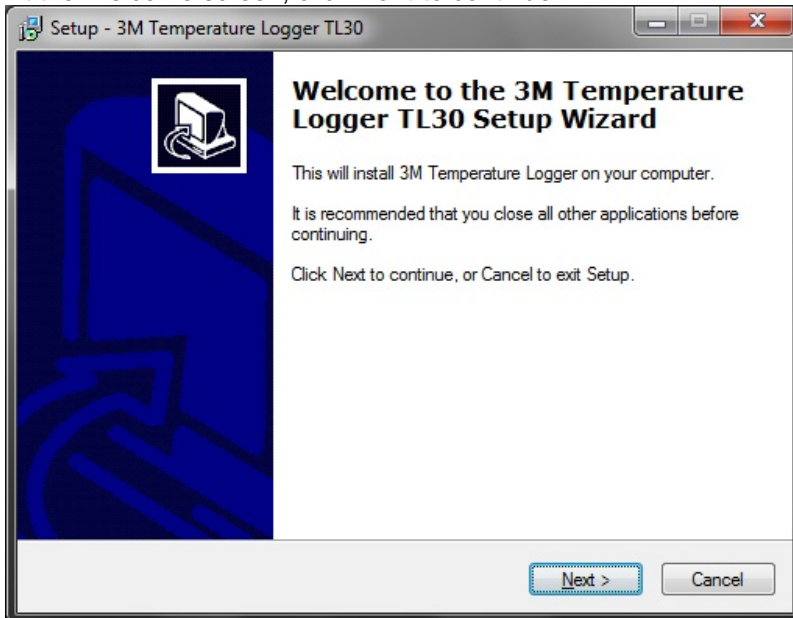


2. If you do not have Excel installed on this computer, you will get a warning message:

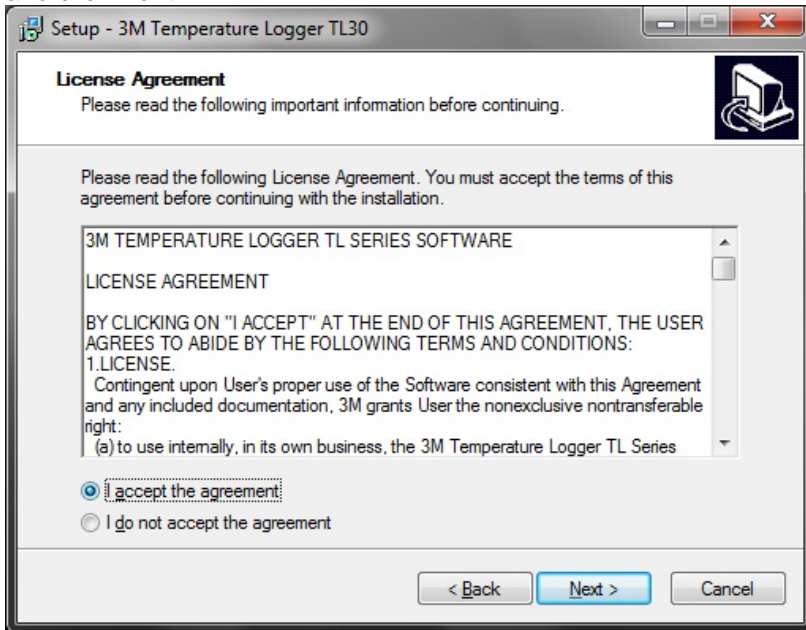


If you click **Yes** then a web browser window will open to the Microsoft home page for you to order and download a full version of Excel. The software will NOT save the data in Excel format unless you have a full version of Excel installed on the PC (just having the Excel Viewer will not work). If you will not use Excel or wish not install it later and want to continue with the installation, then click **No**.

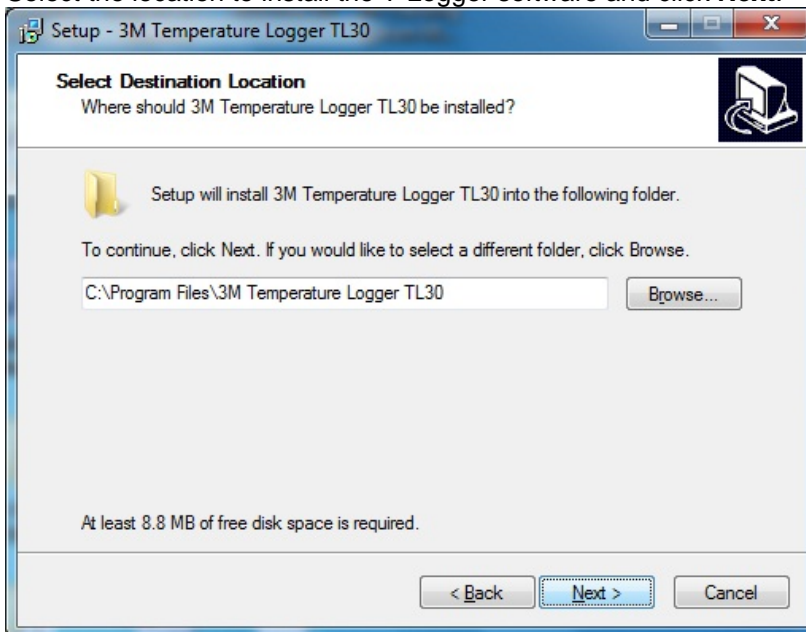
3. At the Welcome screen, click **Next** to continue:



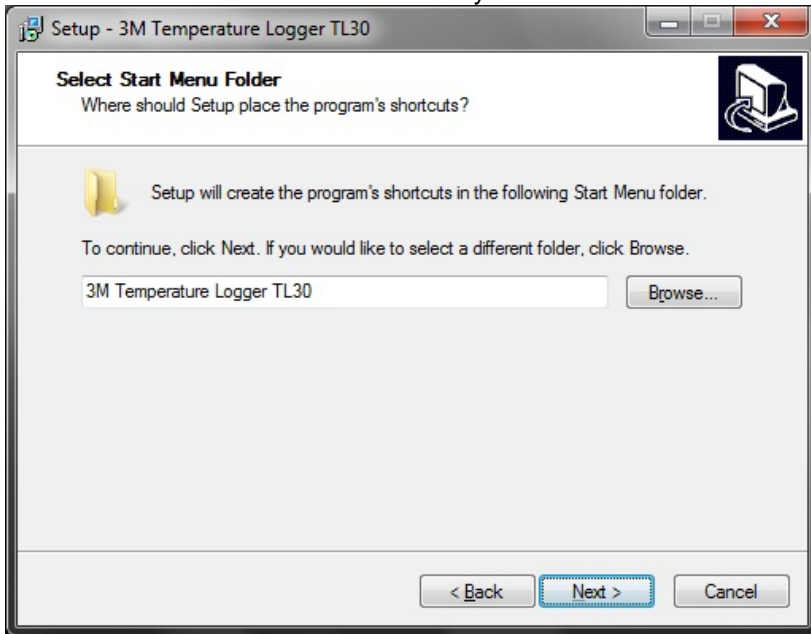
4. Read the license agreement and if you accept the terms and conditions, select “I accept the agreement” and click **Next**:



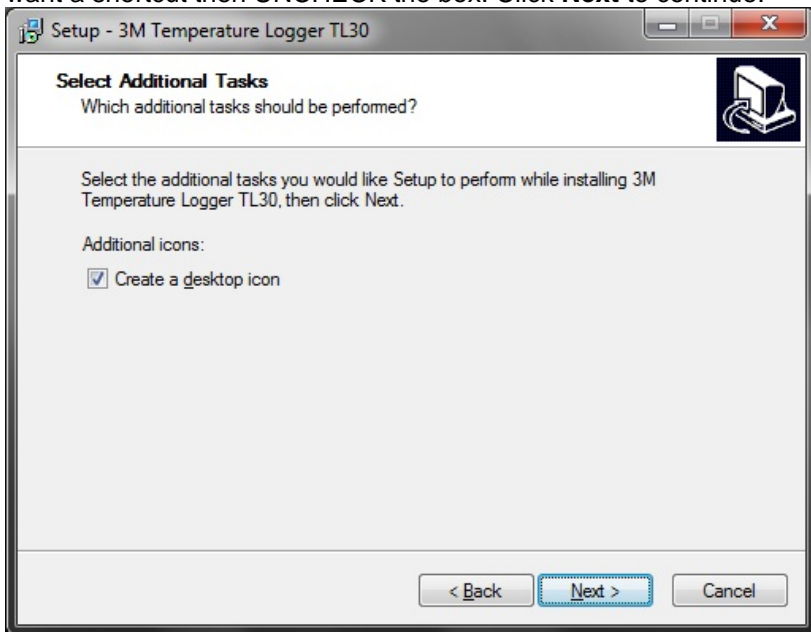
5. Select the location to install the T-Logger software and click **Next**:



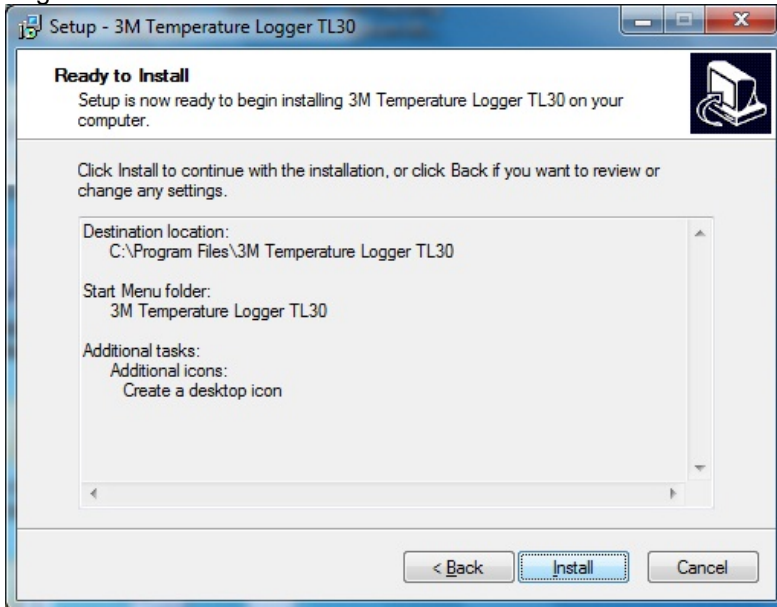
6. Select the name for the Start menu entry and click **Next**:



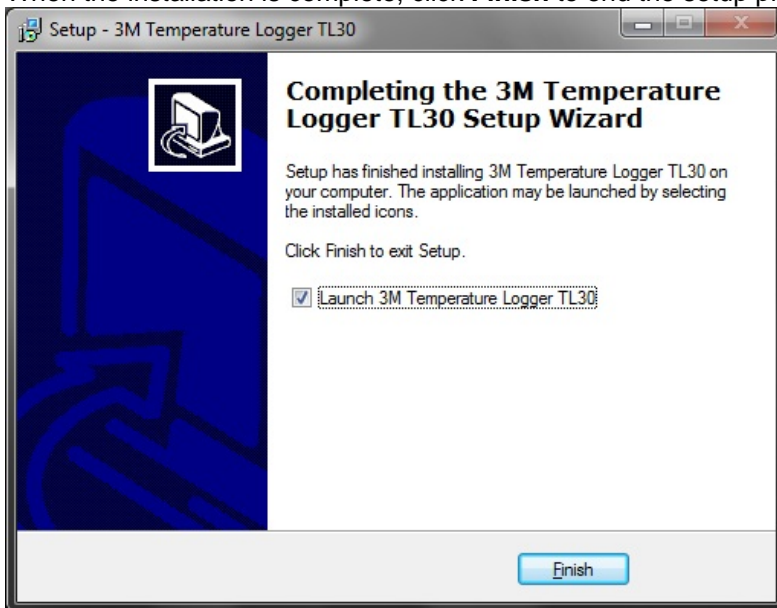
7. Check the box if you want to have a shortcut to the application placed on the desktop. If you do NOT want a shortcut then UNCHECK the box. Click **Next** to continue:



8. Review your selections. If you want to make any changes, click the **Back** button, or else click **Install** to begin the installation:



9. When the installation is complete, click **Finish** to end the setup program and start the T-Logger software.



Appendix A – Troubleshooting

Is the USB cable connected DIRECTLY to the computer?

The cable must be connected to a USB port directly on the PC. It cannot be run through a USB hub or on a USB port on a laptop docking station / port replicator.

Have you pressed the “Wake Up” button on the TL-30?

You must press the Wake Up button on the TL-30 to open the connection to the device. If the unit sits for more than 5 minutes then it will go back into a “sleep” mode on the port and you will have to press Wake Up again.

Is there another device that is using the USB port?

Some software programs that synchronize portable devices to your PC may install and use USB ports without you knowing. Check any other software and make sure it is not using USB ports. You may also want to test the port with some other USB device and make sure the port is working.

=====
For additional assistance, please refer to the Frequently Asked Questions (FAQ) on the Temperature Logger web site.

If you need assistance...

3M service phone numbers

For all service inquiries, including warranty service, call one of the following numbers and ask for software support.

In the United States

1-800-944-3512

In the United States, you can also send email to ft-software-support@mmm.com

In Other Countries

Call your local 3M office.